

## MSQ 122



codice  
code

Mobile sospeso SQUARED struttura nera con 2 cassetti finitura cemento  
*SQUARED wall-hung cabinet black structure and cement finish with two drawers* **MSQ 122 N C**

Mobile sospeso SQUARED struttura nera con 2 cassetti finitura olmo bianco  
*SQUARED wall-hung cabinet black structure and white elm finish with two drawers* **MSQ 122 N B**

Mobile sospeso SQUARED struttura nera con 2 cassetti finitura olmo naturale  
*SQUARED wall-hung cabinet black structure and natural elm finish with two drawers* **MSQ 122 N N**

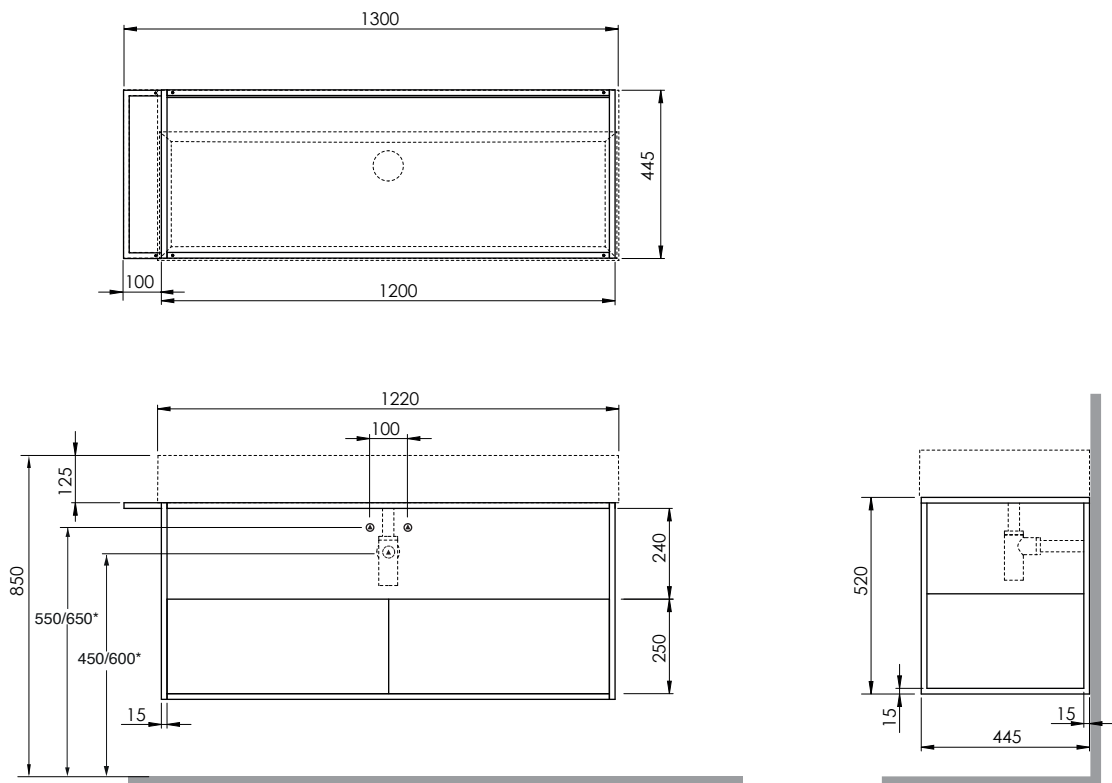
Mobile sospeso SQUARED struttura bianca con 2 cassetti finitura cemento  
*SQUARED wall-hung cabinet white structure and cement finish with two drawers* **MSQ 122 B C**

Mobile sospeso SQUARED struttura bianca con 2 cassetti finitura olmo bianco  
*SQUARED wall-hung cabinet white structure and white elm finish with two drawers* **MSQ 122 B B**

Mobile sospeso SQUARED struttura bianca con 2 cassetti finitura olmo naturale  
*SQUARED wall-hung cabinet white structure and natural elm finish with two drawers* **MSQ 122 B N**

Cm 130X44,5XH52

kg 32,2



\* 600/650: misura per installazione mobili CROMA e SQUARED  
\* 600/650: heights for CROMA and SQUARED furniture installation

scala/scale 1:20 dimensioni/dimensions in mm

Gamma di colori disponibile per MOBILE  
Color range available for FURNITURE



Gamma di colori disponibile per STRUTTURA  
Color range available for STRUCTURE



TECHNICAL SHEET n°: <b>01</b>	DESIGNER: <b>OFFICINA AZZURRA</b>	CODE: <b>MSQ 122</b>	Azzurra sanitari in ceramica S.p.a. via Civita Castellana snc 01030 Castel S.Elia (VT) - ITALY Tel.+39.0761 518155 Fax.+39.0761 514560	
SHEET FORMAT: <b>A4</b>	ISO	REVISION: <b>03</b>	SCALE: <b>1:20</b>	DATE : <b>06/06/2022</b>
REGULATIONS				
All the measurements respect the tolerances provided by the "AZZURRA QUALITY GUIDELINES".				

